



180 Montague Street PH D
Brooklyn, N.Y. 11201

(c) (718) 246-0277
(c) (917) 538-9706

website - www.gadesigns.net
email - george@gadesigns.net

THIS DRAWING REPRESENTS VISUAL
CONCEPTS & CONSTRUCTION
SUGGESTIONS ONLY AS THEY AFFECT
THE SCENERY.

THE DESIGNER IS UNQUALIFIED TO
DETERMINE STRUCTURAL
APPROPRIATENESS OF THE DESIGN &
WILL NOT ASSUME RESPONSIBILITY
FOR IMPROPER ENGINEERING,
CONSTRUCTION OR USE OF THE
SCENERY. THE SHOP IS TO PROVIDE
DETAILED CONSTRUCTION DRAWINGS
OUTLINING TECHNIQUES & MATERIALS
IF THEY WILL RESULT IN ANY
DEVIATION FROM THE LOOK
EXPRESSED OR WILL RESULT IN THE
DIMENSIONAL CHANGE OF ANY
DESIGN DETAIL.

ALL DESIGN DRAWINGS AND MODELS
ARE COPYRIGHTED BY THE DESIGNER
& REMAIN SOLELY THE PROPERTY OF
GEORGE ALLISON DESIGNS.

ALL MATERIALS & CONSTRUCTION
MUST COMPLY WITH THE MOST
STRINGENT FEDERAL & LOCAL
SAFETY, FIRE, BUILDING & ELECTRICAL
CODES.

WRITTEN DIMENSIONS ON ALL
DRAWINGS SHALL HAVE AUTHORITY
OVER SCALED DIMENSIONS

REVISIONS

DATE	DESCRIPTION

STUDIO

T. SCHREIBER STUDIO

THE GLORIA MADDOX
THEATRE
151 W 26TH ST. NYC

GENERAL GROUNDPLAN
AND SECTIONS

DRAWN DATE 2/9/06 DELIVERY DATE
SCALE 1/4" = 1'-0" PRODUCTION DATE

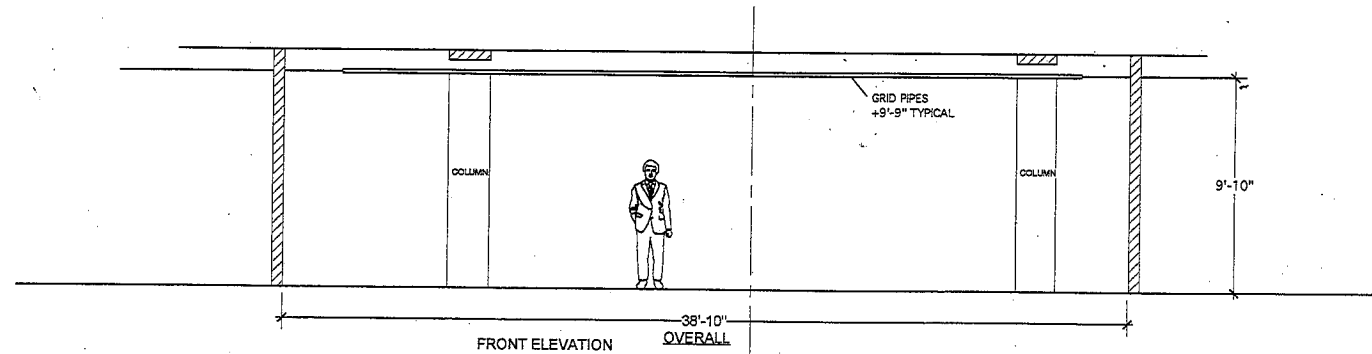
SHEET #

1

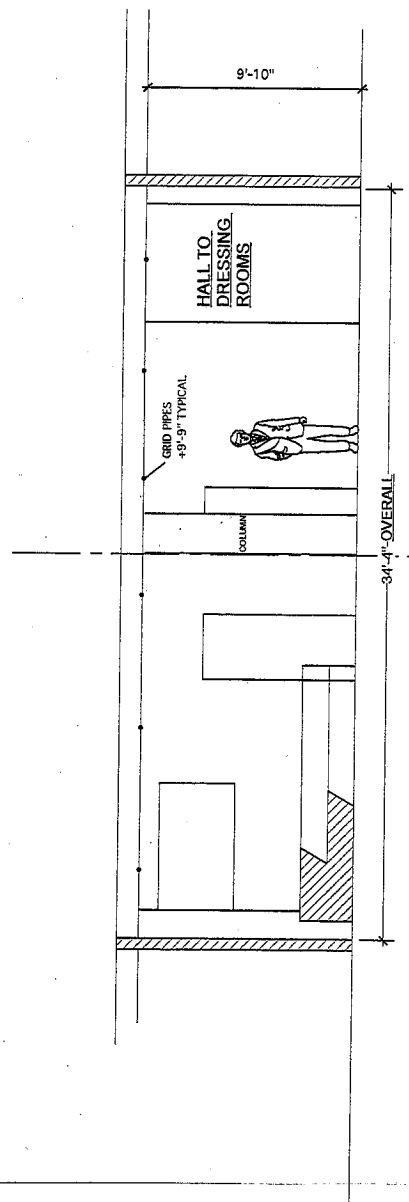


S.D. 595
SCENIC DESIGNER

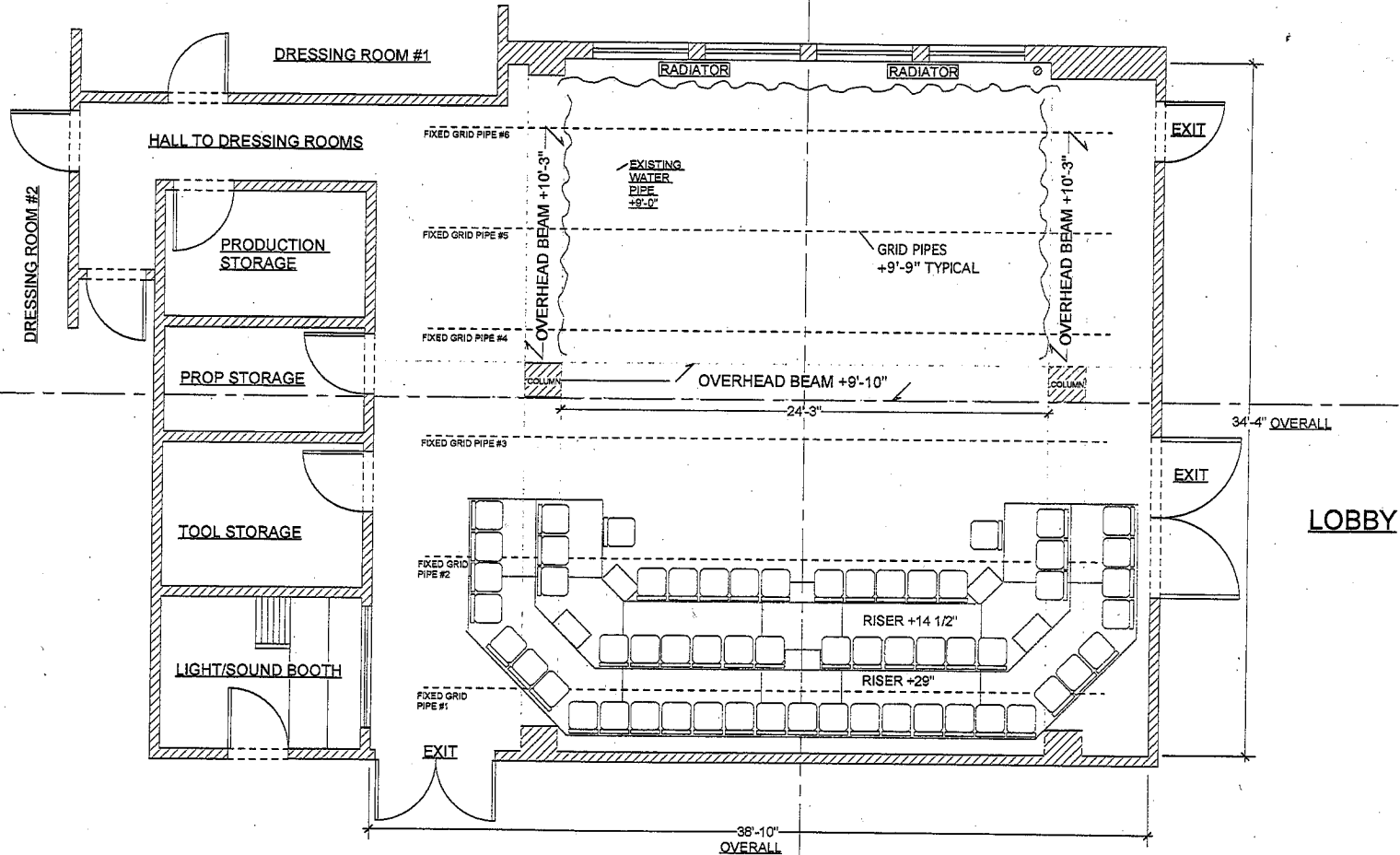
OF



3 NORTH SECTION
Scale: 1/4" = 1'-0"



2 WEST SECTION
Scale: 1/4" = 1'-0"



1 GENERAL GROUNDPLAN
Scale: 1/4" = 1'-0"

PLEASE CONFIRM ALL
CRITICAL
MEASUREMENTS ONSITE